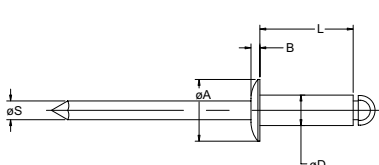


N Rivet CCPS / CCLS / CCCS

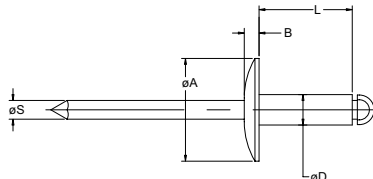
For installation information please refer to the tooling overview and manuals on our website www.avdel-global.com.
 Pour les conditions de pose, merci de vous référer à la description de l'outil et aux manuels disponibles sur notre site Web.
 Angaben zur Verarbeitung entnehmen Sie bitte der Geräteübersicht und den Betriebsanleitungen auf unserer Website.
 Per informazioni sull'installazione preghiamo consultare i manuali e la panoramica degli attrezzi sul nostro sito web.
 Para ver información sobre máquinas de colocación, consulte nuestra página web, apartados visión general de máquinas y manuales.



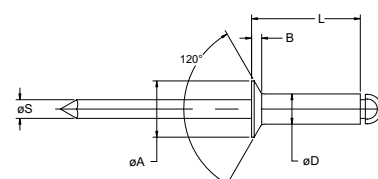
English	Français	Deutsch	Italiano	Español
Body: Stainless steel Natural	Corps: Inox Brut	Hülse: Edelstahl Blank	Corpo: Acciaio Inox Nessuna finitura	Cuerpo: Acero inoxidable Natural
Stem: Stainless steel Natural	Tige: Inox Brut	Dorn: Edelstahl Blank	Gambo: Acciaio Inox Nessuna finitura	Vástago: Acero inoxidable Natural
IFI 114 Grade 51				





N Rivet CCPS
 Protruding head / Tête bombée /
 Flachrundkopf / Testa tonda /
 Cabeza alomada



N Rivet CCLS
 Large flange / Tête large /
 Flachrundkopf, extragroß /
 Testa larga / Cabeza ancha

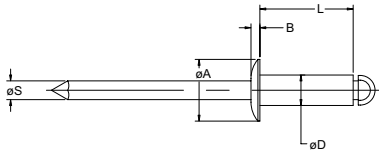


N Rivet CCCS
 Countersunk / Tête fraisée
 Senkkopf / Testa svasata
 Cabeza avellanada

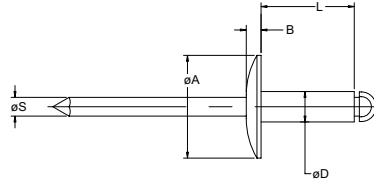
ø					ø D	L	ø S	CCPS Protruding head			CCLS Large flange			CCCS Countersunk				
	nom.	min.						max.	min.	max.	max.	ø A	B	Part No. /ref	ø A	B	Part No. /ref	ø A

all dimensions in inches / en pouces / alle Maße in Zoll / in pollici / en pulgadas

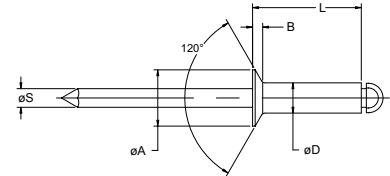
N Rivet CCPS / CCLS / CCCS





N Rivet CCPS
Protruding head / Tête bombée /
Flachrundkopf / Testa tonda /
Cabeza alomada



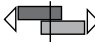

N Rivet CCLS
Large flange / Tête large /
Flachrundkopf, extragroß /
Testa larga / Cabeza ancha



N Rivet CCCS
Countersunk / Tête fraisée
Senkkopf / Testa svasata
Cabeza avellanada

Ø					Ø D	L	Ø S	CCPS Protruding head			CCLS Large flange			CCCS Countersunk		
								Ø A	B	Part No. /ref	Ø A	B	Part No. /ref	Ø A	B	Part No. /ref
nom.	min.	max.	min.	max.		max.			max.	CCPS-		max.	CCLS-		max.	CCCS-
1/4" (6.4 mm)	.020	.125	.257	.261	.250	.375	.151	.500	.080	-08-02				.468	.071	-08-04
	.126	.250								-08-04						-08-06
	.251	.375								-08-06						-08-08
	.376	.500								-08-08						-08-10
	.501	.625								-08-10						-08-10

all dimensions in inches / en pouces / alle Maße in Zoll / in pollici / en pulgadas

Ø		
nom.	lbf min. ¹⁾	lbf min. ¹⁾
3/32" (2.4 mm)	230	280
1/8" (3.2 mm)	420	530
5/32" (4.0 mm)	650	820
3/16" (4.8 mm)	950	1200
1/4" (6.4 mm)	1700	2100

1) Tested per IFI 135 Specification 2.1 and 2.2
Testé par spécification IFI 135 2.1 et 2.2
Getestet nach IFI 135 Spezifikation 2.1 und 2.2
Provato secondo specifica IFI 135 2.1 e 2.2
Comprobado según especificación IFI 135 2.1 y 2.2